

# THE ART OF SPIRIDON DECO



INSPIRED BY OUR CUSTOMERS



# THE ART OF SPIRIDON DECO



version 1.0

DESIGNED BY SPIRIDON DECO  
INSPIRED BY CUSTOMERS  
FROM 2000 TO 2021

[WWW.SPIRIDONDECO.COM](http://WWW.SPIRIDONDECO.COM)

# Spiridon Deco

LIGHT CREATOR



## Who are we?

**The family SPIRIDON believes that all projects and ideas could be materialized.**

We are convinced that originality and quality are not exclusive and that these are two key elements when designing your interiors. That is why we offer a wide range of lightings and the possibility to produce your own personalized chandeliers.

In addition to the collection displayed, any of our model can be modified upon your request. Helped by young designers, our team supports you for any tailor-made product and will guide you through all the step of the creation. Moreover, we offer to the architects and to our professional partner all the help they are needing to make their project a success.

Constantly looking for a perfect consumer experience, we engage ourselves to require from our workshop a dedicated work. Thanks to an exigent selection of our raw materials, the quality of the artisanal manufacture of our products is guaranteed. Our close relationship with our partners allows us to answer quickly to any of your specific needs.





Model : **POMPADOUR** (H. 159cm)  
Floor lamp from **MARQUISE** family.  
*Overlays of modules composed by braids  
of glass beads and pearls.*







4.

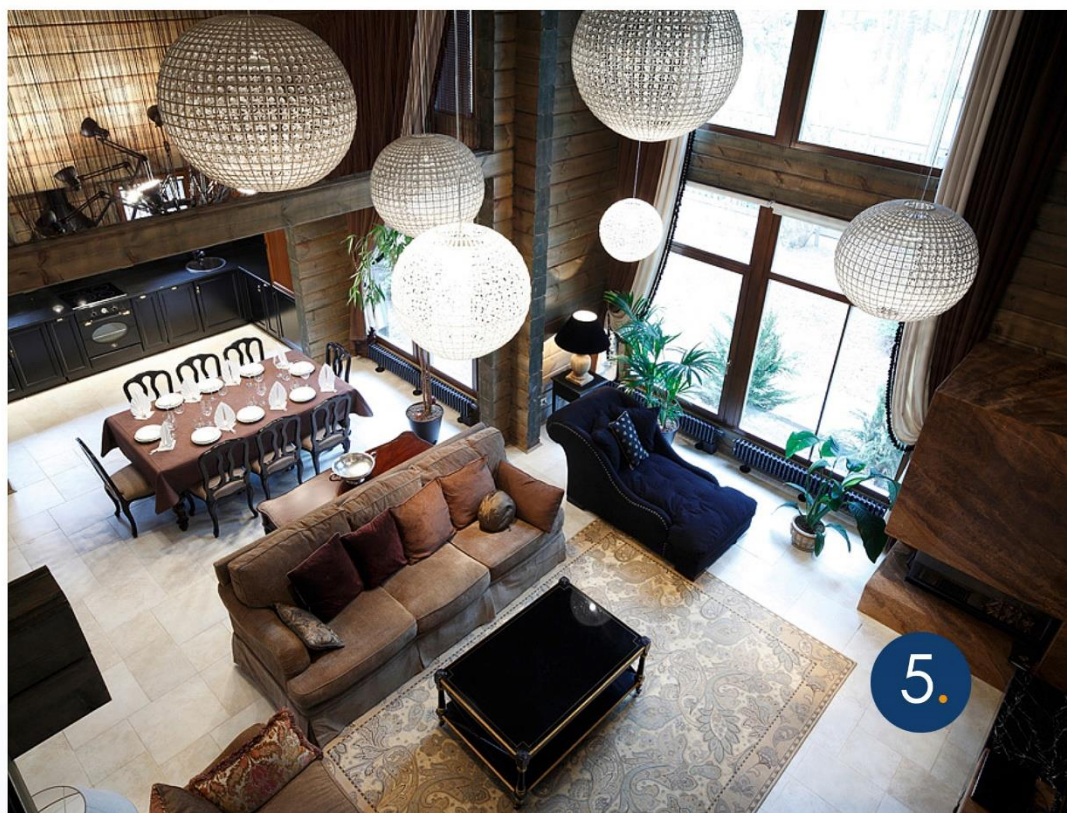


Model : **TUMULUS** (Ø.100cm)  
Suspension from COROLLE family.  
Domed and circular metal structure entirely  
covered with glass sheets.





Model : **BIJOU** (Ø.30~90cm)  
Suspensions from **FLAMBEAU** family.  
Glass crystals fixed on a spheric metal  
structure, covered by glass beads.







Model : **STRASS** (Ø.70cm)  
Suspension from BALUR family.  
*Glass crystals fixed on a circular metal structure, covered by glass beads.*



6.



Model : **CRISTAL** (L.160cm)  
Suspension from BALUR family.  
*Glass crystals fixed on an oval metal structure, covered by glass beads.*





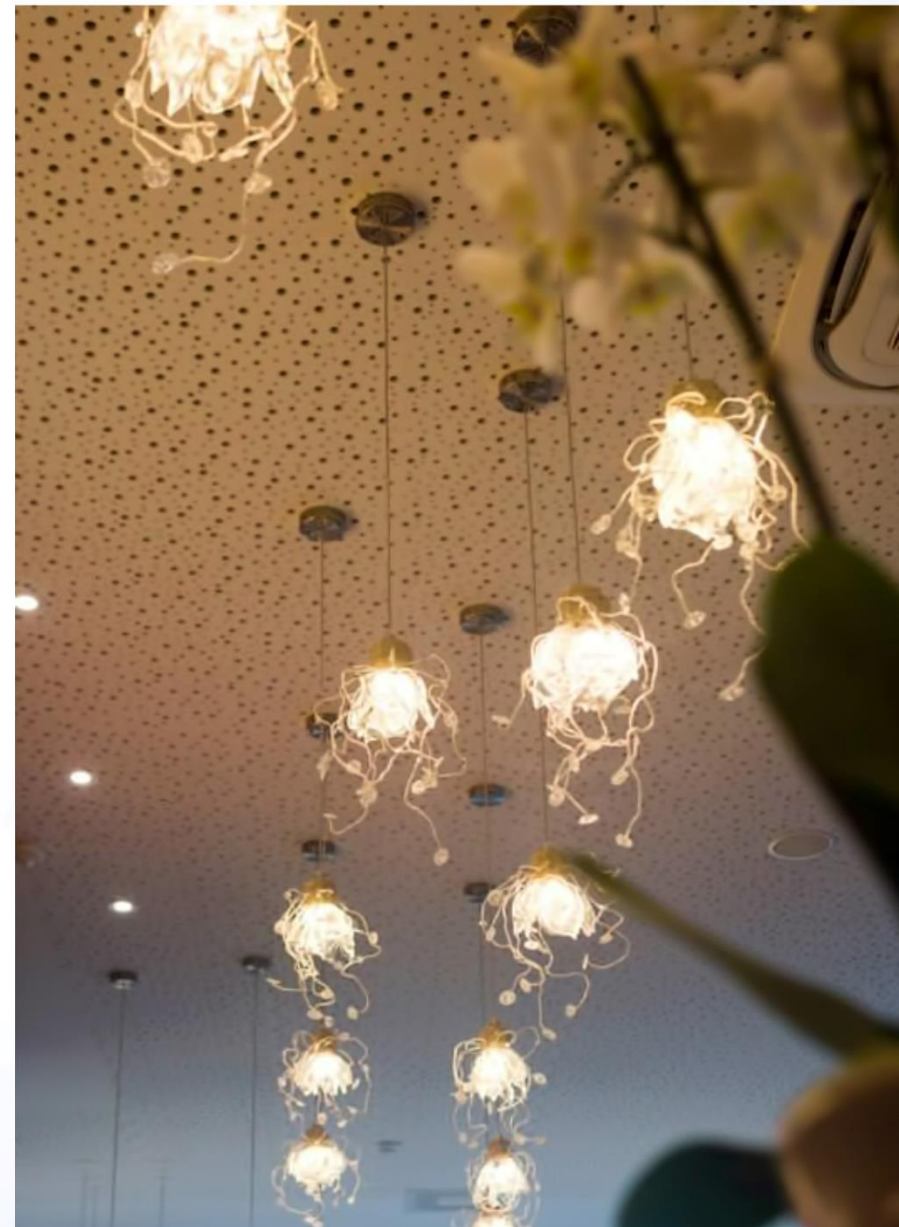
Model : **PARACHUTE** (H. 160~235cm)  
 Suspensions from **FLAMBEAU** family.  
 Glass crystals and copper pieces fixed on a  
 structure and covered with glass beads.







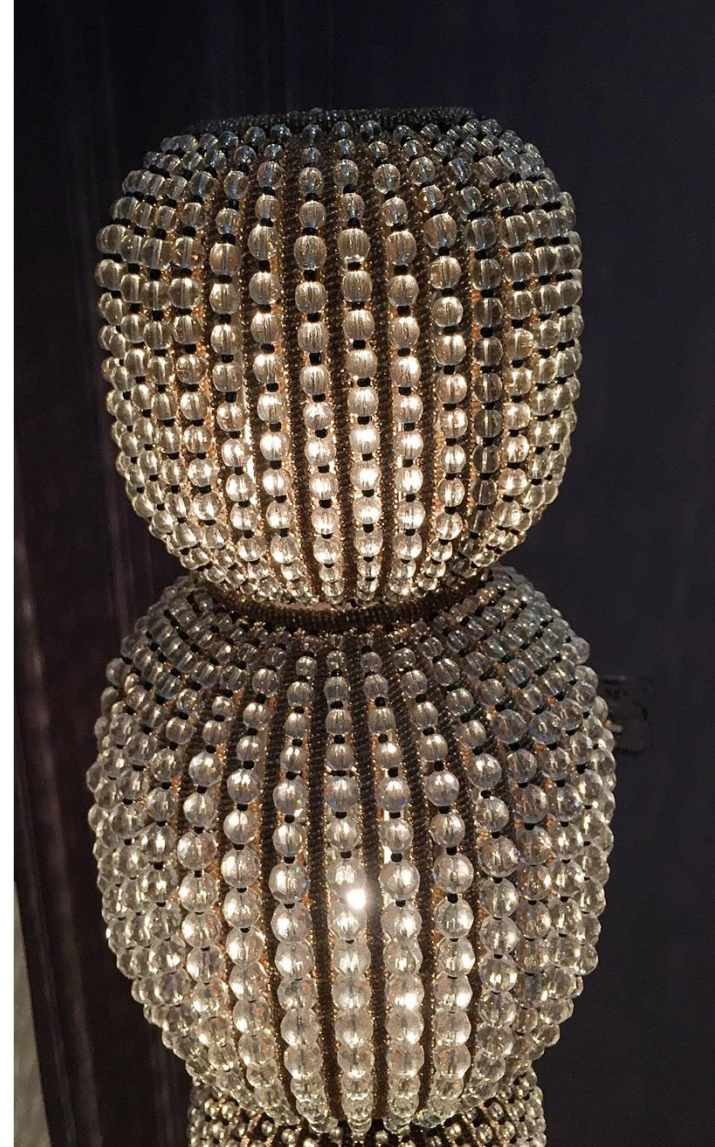
Model : **GUI** (Ø.16cm)  
 Suspensions from **PETALE** family.  
*Assembly of mat or shiny glass petals and beads, extended by little glass pendants.*









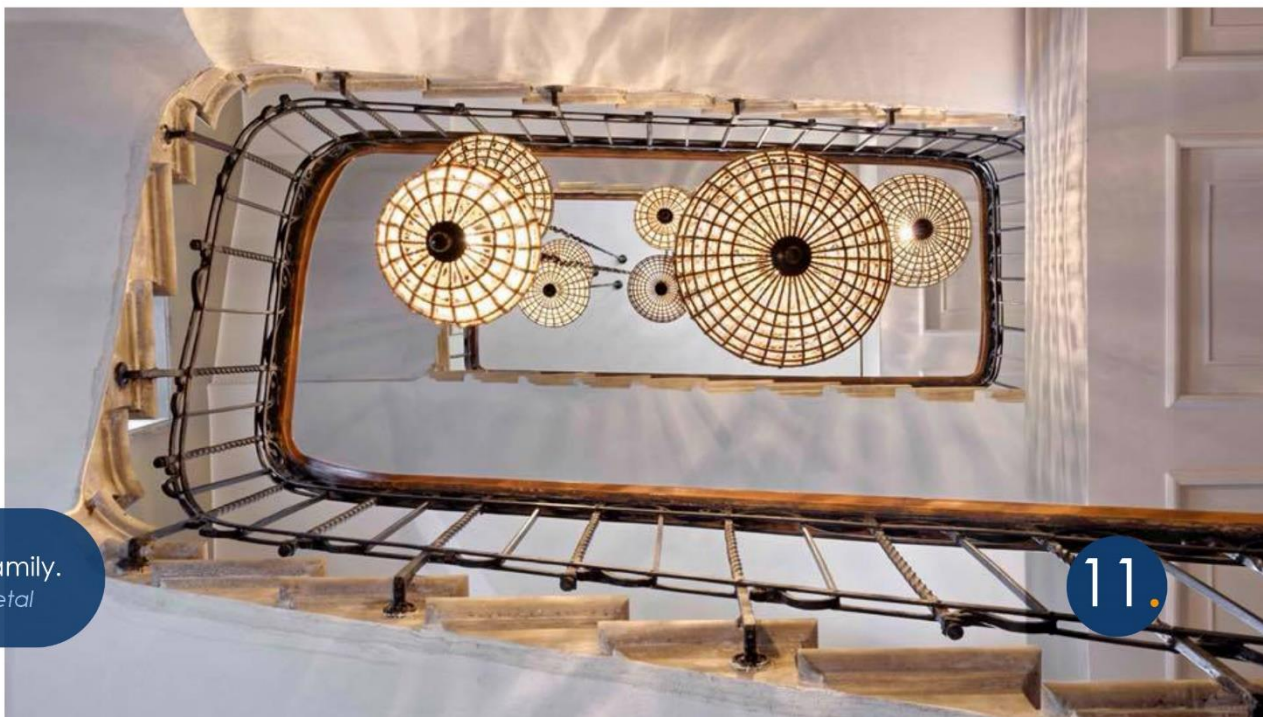


10.



Model : **POMPADOUR** (H.176cm)  
Floor lamp from MARQUISE family.  
*Superposition of pearl and glass bead  
modules fixed on a circular metal plate.*





Model : **CANON** (Ø.20~50cm)  
Suspensions from **FLAMBEAU** family.  
Glass crystals fixed on a spherical metal  
structure, with cap and copper tip.









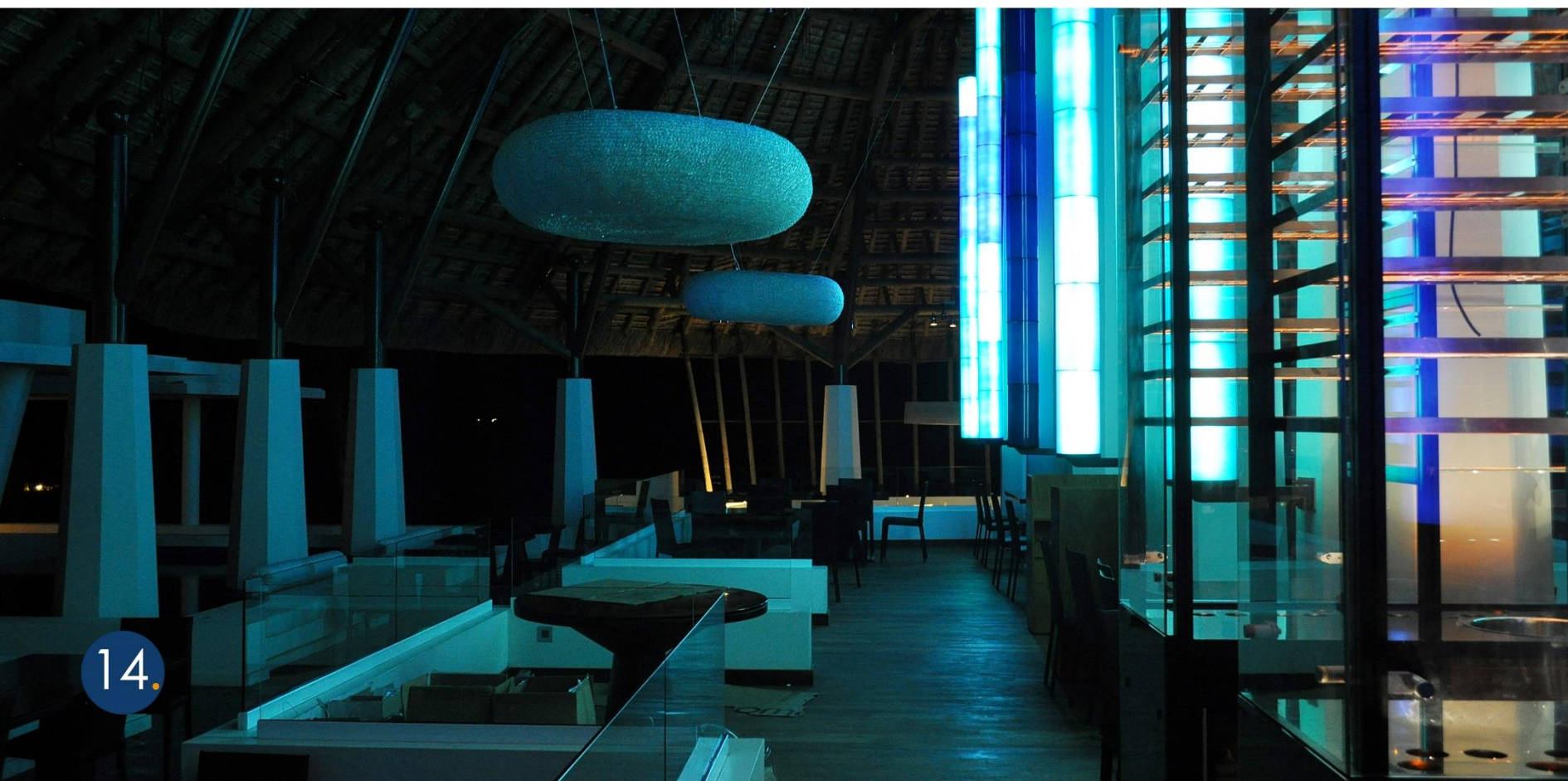
S.

Model : **STRASS** (Ø.100cm)  
Suspension from **BALUR** family.  
*Glass crystals fixed on an circular metal  
structure, covered by glass beads.*

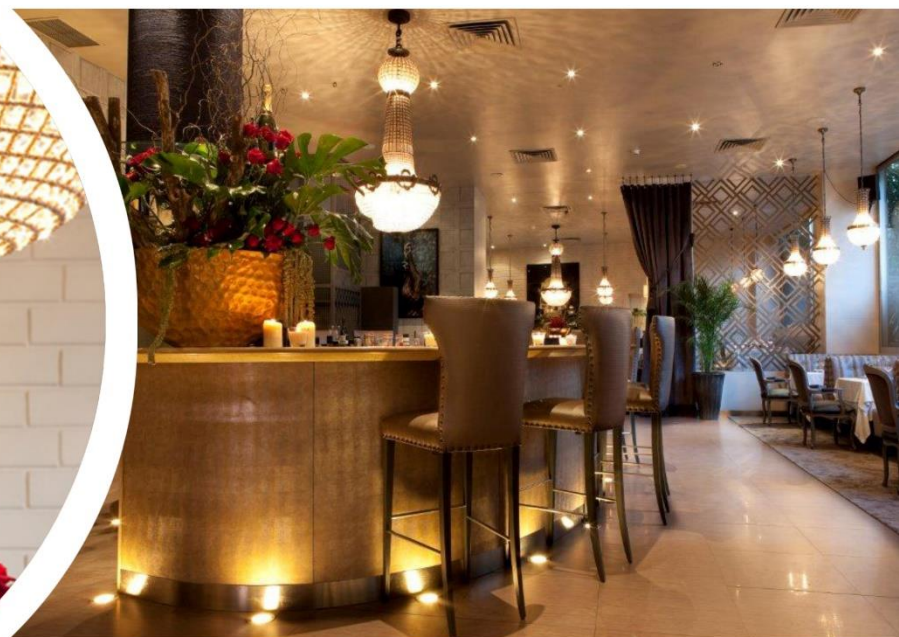




Model : **STRATUS** (Ø.240cm)  
Suspension from COROLLE family.  
Flattened ball-shaped metal structure  
entirely covered with glass sheets.





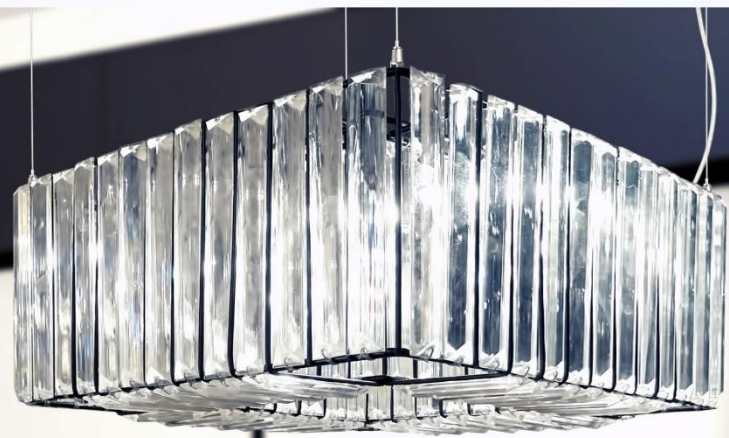


Model : **PARACHUTE** (H.72~160cm)  
 Suspensions from **FLAMBEAU** family.  
 Glass crystals and copper pieces fixed on a  
 structure ad covered with glass beads.







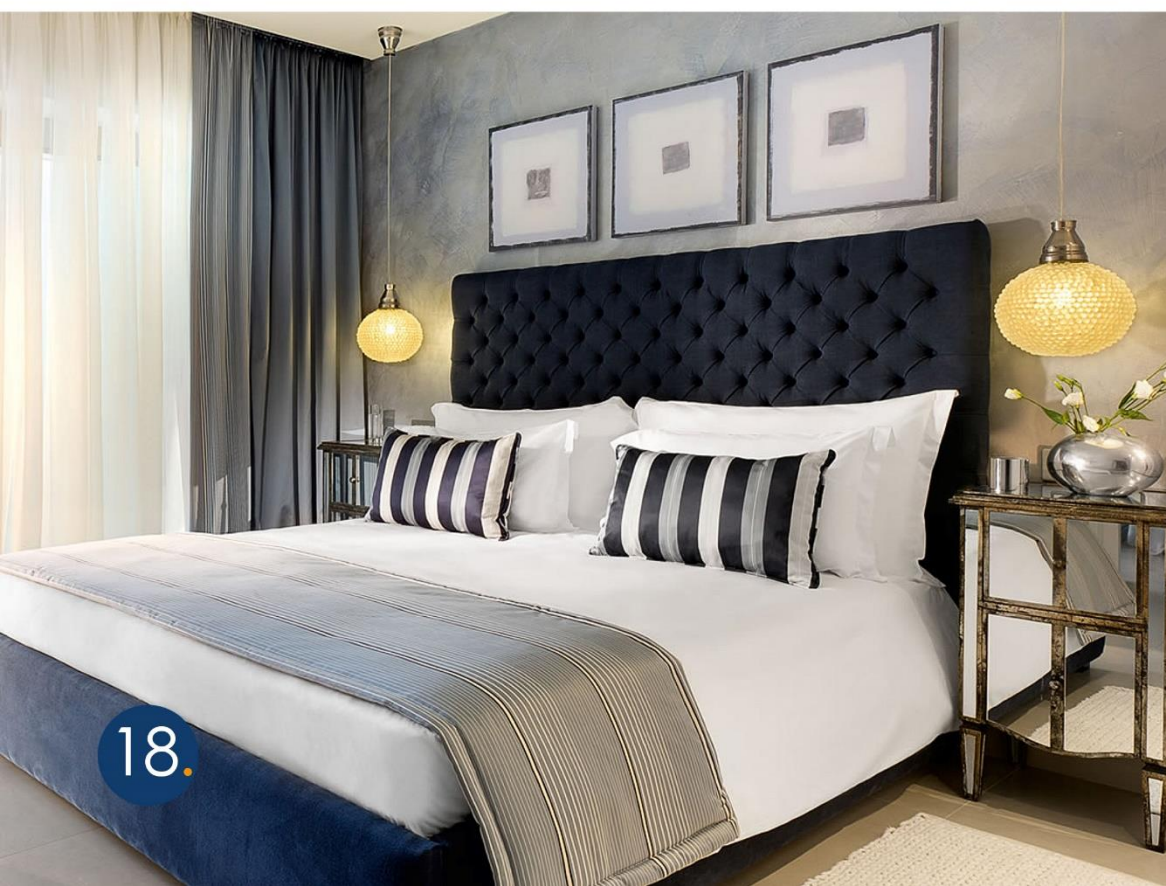


Model : **MURABA** (25x25x15cm)  
Floor lamp from BALUR family.  
*Glass crystals fixed in row on a square  
structure in nickel-plated metal.*





Model : **MAINTENON** (Ø.20~25cm)  
Suspensions from **MARQUISE** family.  
*Module composed by braids of glass  
beads and pearls.*



18.



Model : **BIELA** (Ø.21~27cm)  
Suspensions from **ATOME** family.  
*A multitude of glass balls fixed to a slightly  
flattened ball structure and covered with a  
metal cap.*



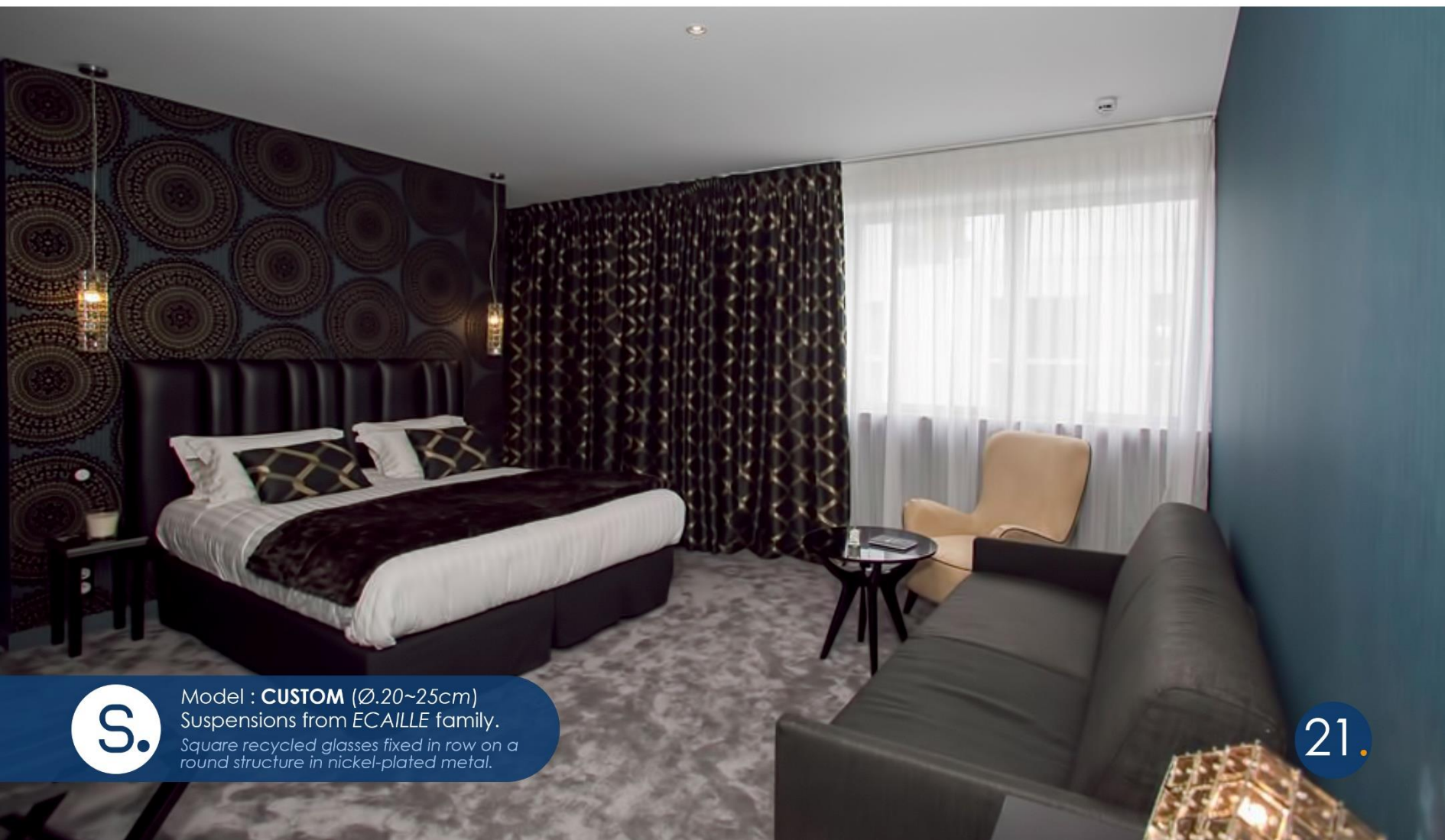


Model : **BIELA** (Ø.60cm)  
Suspensions from **ATOME** family.  
*A multitude of glass balls fixed to a  
ounded metal structure.*



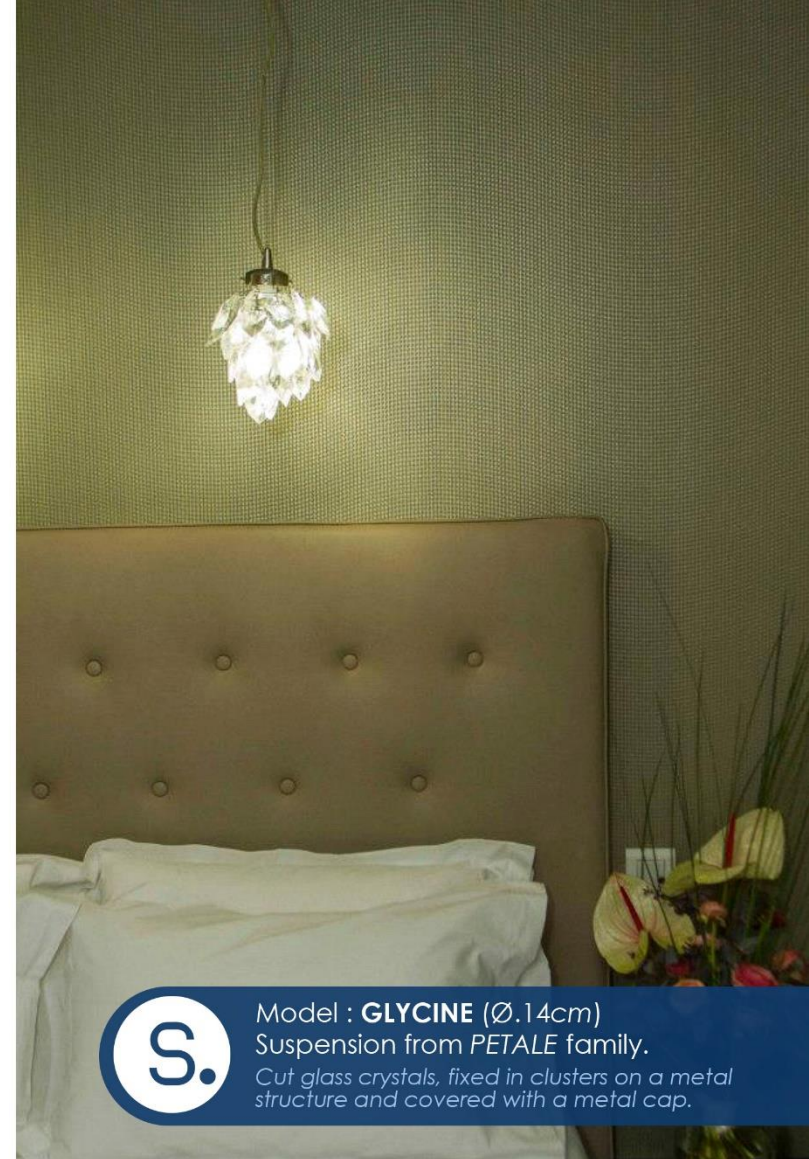






Model : **CUSTOM** (Ø.20~25cm)  
Suspensions from ECAILLE family.  
*Square recycled glasses fixed in row on a  
round structure in nickel-plated metal.*













24.



Model : **GLYCINE** (H.26cm)  
Table lamp from **PETALE** family.  
*Bouquet of mat glass petals presented in a metal pot.*





Model : **RONDIN** (H.30cm)  
Suspensions from COROLLE family.  
Cylindrical metal structure entirely covered  
with glass sheets.



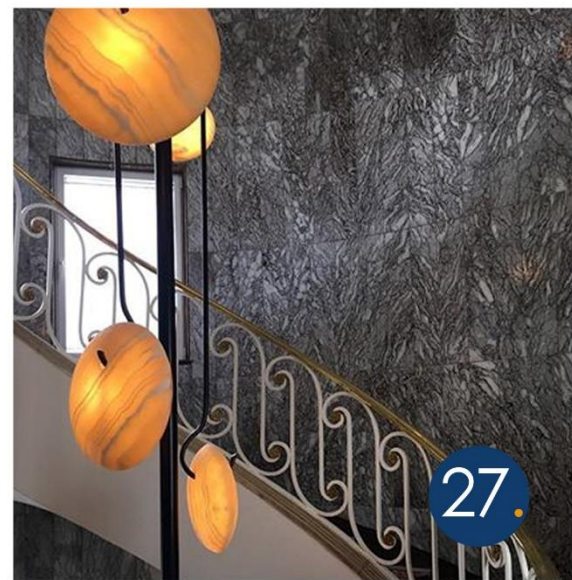


Model : **POMPADOUR** (custom)  
Suspensions from MARQUISE family.  
*Overlays of modules composed by braids  
of glass beads and pearls.*





Model : **CUSTOM** (Ø.30~50cm)  
Suspensions from customer mind.  
Two domed plates in yellow alabaster held  
by a metal hook











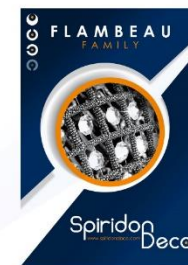
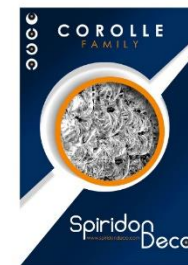
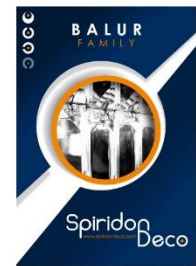
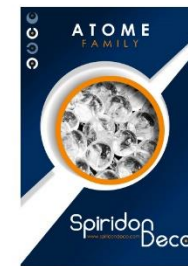
Model : **CUSTOM** (Ø.70cm)  
Suspension from *BALUR* family.  
*Glass crystals fixed in row on an circular metal  
structure with metal wire rack below.*





The majority of the models that you could appreciate in this ART OF SPIRIDON catalog are part of our different collections. They are grouped by FAMILY through a series of focus catalogs available on request or direct download from our website: [www.spiridondeco.com/en/catalogs/](http://www.spiridondeco.com/en/catalogs/)

Find all our collections in glass beads, crystals, flower petals and many others in our focus catalogs dedicated to each SPIRIDON family. True decoration bibles, you will find all the information, variations, technical sheets and assembly plans of our models there in order to support you in a concrete and precise way in each of your projects.





In our ART OF SPIRIDON catalog you have also seen models that come out of our collections. Each year, the SPIRIDON-DECO designer studio and our workshops develop original and unpublished models, which meet the particular requirements of our customers.

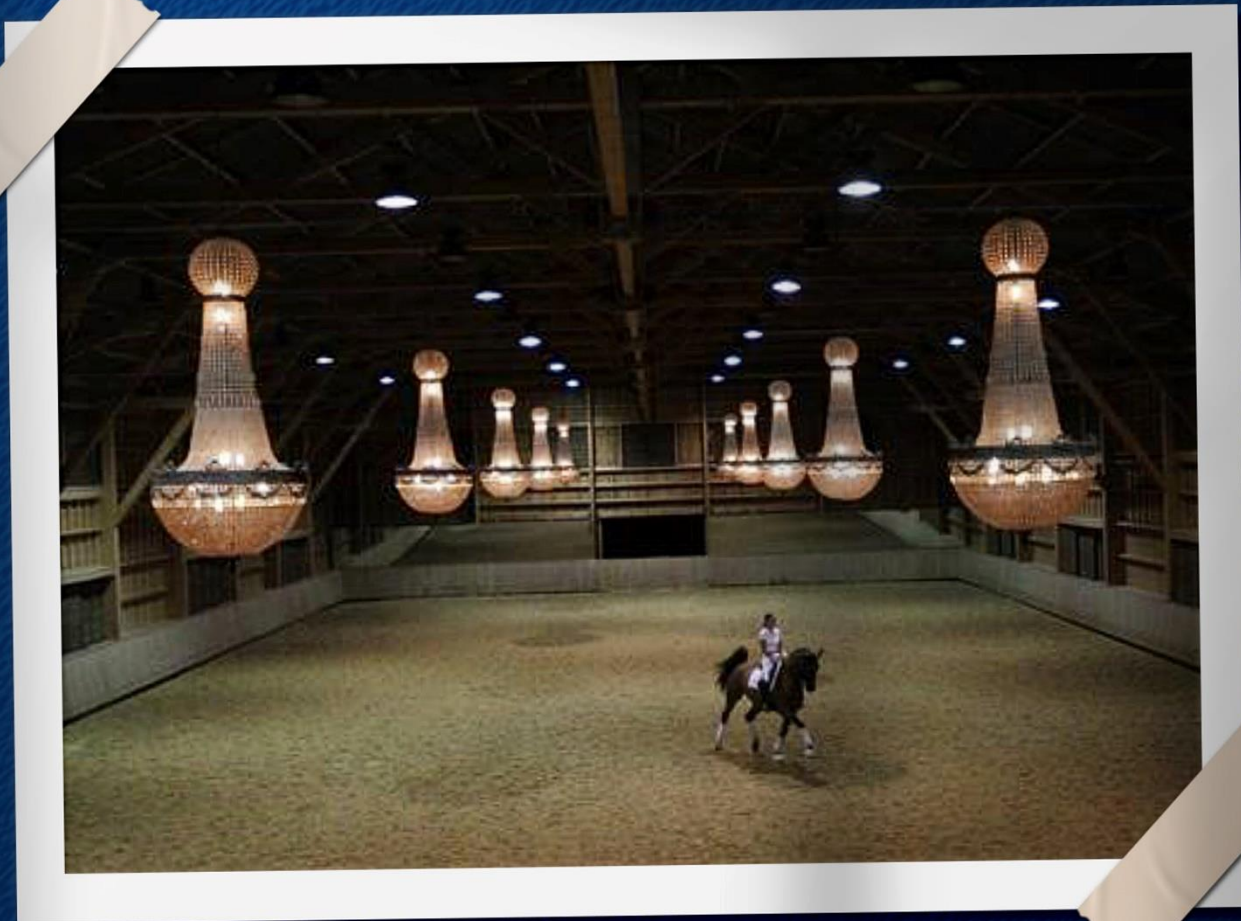
*In order to satisfy our customers around the world, we offer a custom design service. You choose the size, diameter, materials, finish or a whole series of parameters that will allow your luminaire to match perfectly to your interior.*

Contact us to talk together about your project: : [info@spiridondeco.com](mailto:info@spiridondeco.com)



handcrafted  
full customizable models





## THANK YOU !

*Thank you for viewing our Art of Spiridon catalog in which you were able to discover our family business and part of our lighting collection. And thank you also to all our customers who inspire us every day for more than 20 years through their fabulous projects!*

*The Spiridon family.*



Spiridon  
Deco













## **SPIRIDON DECO**

21 Rue de l'Ancienne Potence

BE-7503 FROYENNES

+32(0)69 55 65 53

[Info@spiridondeco.com](mailto:Info@spiridondeco.com)

[www.spiridondeco.com](http://www.spiridondeco.com)